



DRUM CUTTER



EFFECTIVE MATERIAL REMOVAL

The transverse drum cutter range is designed to work on a wide range of excavators (2-60T). They are an ideal attachment for rocky terrain excavation, trenching and surface scaling in the most adverse terrain conditions. Coupled with multiple drum configurations, our drum cutters ensure high performance, maximum productivity and value add to our customers.

HIGH QUALITY CONSTRUCTION & DESIGN

Low noise and vibration levels guarantee low-fatigue working conditions and less wear on your machine's components.

ROBUST SPUR GEAR

Extreme torque amplification due to our robust spur gear, to achieve best in class pic force where it matters most. No nonsense workhorse.

LARGE DRUM AND PICK ASSORTMENT

Fast, easy exchange of wear parts reduces downtime and enables your drum cutter to be ready for any task.



LOW MAINTENANCE OPERATION

Durable, low-maintenance operation due to large-scale drive shaft bearing, heavy-duty sealing system and robust housing structure. Suitable for hard continuous running!

WATERPROOF TO 80 FEET DEPTH

Our drum cutter range is completely waterproof up to a depth of 25m. This feature allows trenching in the most inaccessible locations.

ADJUSTABLE HYDRAULIC MOTORS

Hydraulic motor can be adjusted in accordance with hydraulic output of excavator to maximise throughput and make sure your machine & attachment work at their highest level of efficiency & performance.

Applications

- ▶ Scaling of rock and concrete walls
- ▶ Tunnel Excavation
- ▶ Trenching in extreme grounds
- ▶ Loosen hard rock ground effectively
- ▶ Under water trenching up to 80 ft
- ▶ Tunnel excavation
- ▶ Mining operations

www.augertorqueusa.com

CALL +1 770 741 0180

EMAIL sales@augertorqueusa.com

OR CONTACT YOUR NEAREST DEALER

99-97xxx rev x-x

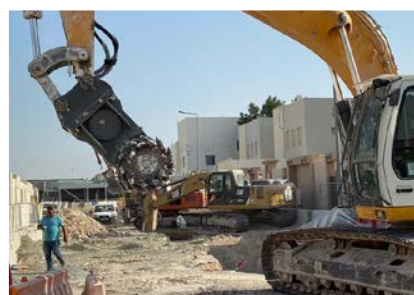
Specifications

Model		KDC04	KDC06	KDC08	KDC15	KDC20	KDC30	KDC35	KDC45	KDC60
Carrier Weight	t	2-4	4-6	6-8	8-15	15-20	20-30	30-35	35-45	45-60
Product Length	inch mm	28* 700*	28* 700*	28* 700*	33 835	38* 965*	43 1093	43 1095	43 1095	53 1345
Drum Dimensions (width x dia.)	inch mm	20x13* 500x325*	20x13* 500x325*	20x13* 500x325*	25x15* 630x390*	30x22* 750x550*	35x24 900x615	35x24 900x615	47x30 1200x760	55x30 1400x760
Connecting Plate (width x length)	inch mm	13x12 320x310	13x12 320x310	13x12 320x310	16x19 405x475	21x20 530x510	24x26 600x650	24x26 600x650	29x31 740x780	29x31 740x780
Weight approx.	lb kg	551 250	551 250	551 250	926 420	1874 850	3086 1400	3219 1460	5622 2550	6173 2800
Nominal Power	hp kW	24 18	24 18	30 22	40 30	60 45	80 60	121 90	161 120	188 140
Max. Torque	ft-lb Nm	1719 2330	1719 2330	3503 4750	5812 7880	7368 9990	10068 13650	17812 24150	26700 36200	32158 43600
Oil Flow	gpm lpm	12.7 48	13.2 50	15.9 60	23.8-30.4 90-115	26.4-44.9 100-170	37.0 140-210	63.4-89.8 240-340	79.3-132.1 300-500	95.1-158.5 360-600
Operating Pressure	psi bar	3118/2611 215/180	3118/2611 215/180	3118/2611 215/180	3263-2611 225-180	2901/2611 200/180	3481-2901 240/200	3046/2611 210/180	2973/2611 205/180	3263/2758 225/190
Pic Force	kN	16-26.6	16-26.6	16-26.6	23-40	32-36	44.5	39.3	78-95	115
Cutting Width	inch mm	19.6 500	19.6 500	19.6 500	24.8 630	29.5 750	35.4 900	35.4 900	47.2 1200	55.0 1400

*excavating & demolition drum

**profiling drum

Drum & Pick Arrangements



Part of the Auger Torque Earthmoving range

EARTH DRILLS | AUGERS & WEAR PARTS | SCREW PILE DRIVES | TRENCHERS | HAMMERS

www.augertorqueusa.com

CALL +1 770 741 0180

EMAIL sales@augertorqueusa.com

OR CONTACT YOUR NEAREST DEALER