



# 100,000MAX EARTH DRILL



## PART OF THE HEAVY DUTY RANGE

**A perfect choice for excavators between 21 - 50T, this drive unit is geared towards high torque applications.**

With a weight of just over 2300 lb we have managed to keep the weight down for versatility whilst not sacrificing any of the robustness our drives are renowned for.

Running a massive 5.9in HEX shaft we are confident it will stand up to the toughest of applications time & time again.

### 5.9 INCH HEX SHAFT

The driveshaft is crucial for reliability and it goes without saying that the bigger the better applies here. A shaft is always stronger when machined as a hex and the 5.9in diameter is the largest in the industry, especially when looking at compatibility on machines as small as 21T.



### AXIAL PISTON MOTOR

Axial Piston Motors allow us to run a single speed motor. By using an axial piston motor with our drive we can have a high speed motor but still achieve high torques through the gearbox multiplication. At maximum flow we achieve 15 rpm.

### EPICYCLIC GEARBOX

Torque is amplified by using the unique Auger Torque planetary gearbox. This system allows the motors output torque to be multiplied with extreme efficiency as well as ensuring the durability and reliability you need.

### SINGLE PIECE NON-DISLODGE MENT SHAFT

As standard with all of our auger & screw pile drives, our patented single-piece non-dislodgement shaft is of course a standard feature. We are so confident in this must have safety feature that we are covering it with a lifetime warranty.



[www.augertorqueusa.com](http://www.augertorqueusa.com)

CALL +1 844 287 6300

EMAIL [sales@augertorqueusa.com](mailto:sales@augertorqueusa.com)

OR CONTACT YOUR NEAREST DEALER

# 100,000MAX EARTH DRILL

## Features

- ▶ Up to 73,807 ft-lb of Torque
- ▶ Up to 15 rpm rotational speed
- ▶ Massive 5.9in Hex Shaft
- ▶ Large main shaft bearings
- ▶ Non-Dislodgement Shaft
- ▶ Life time non-dislodgement guarantee
- ▶ Low-weight at just over 2,300 lb
- ▶ Single-piece driveshaft
- ▶ Compatible with AT Alignment Monitors
- ▶ Covered by Auger Torque's industry leading warranty

## Applications

- ▶ Large diameter & deep auger drilling
- ▶ Hard Rock Auger drilling
- ▶ Core barrel drilling
- ▶ Pole and mast installations
- ▶ Foundation piles
- ▶ Large diameter screw pile installations
- ▶ Rail applications
- ▶ Exploration & research
- ▶ Compatible with excavators from 21T onwards allowing for low impact and reasonably tight access application where typically larger machines would have to be used.

## SPECIFICATIONS

### SUITABLE FOR EXCAVATORS

21 - 50 T

Torque Range: 33,741 - 73,807 ft-lb

Oil Pressure Range: 2321 - 5,076 psi

Oil Flow Range: 26.4 - 74.0 gpm

Speed Range: 5 - 15 rpm

Unit Height: 63.90 in

Unit Diameter: 25.04 in

Unit Weight: 2,339 lbs

### OUTPUT SHAFT

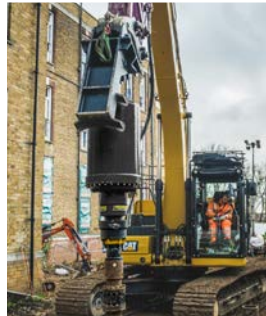
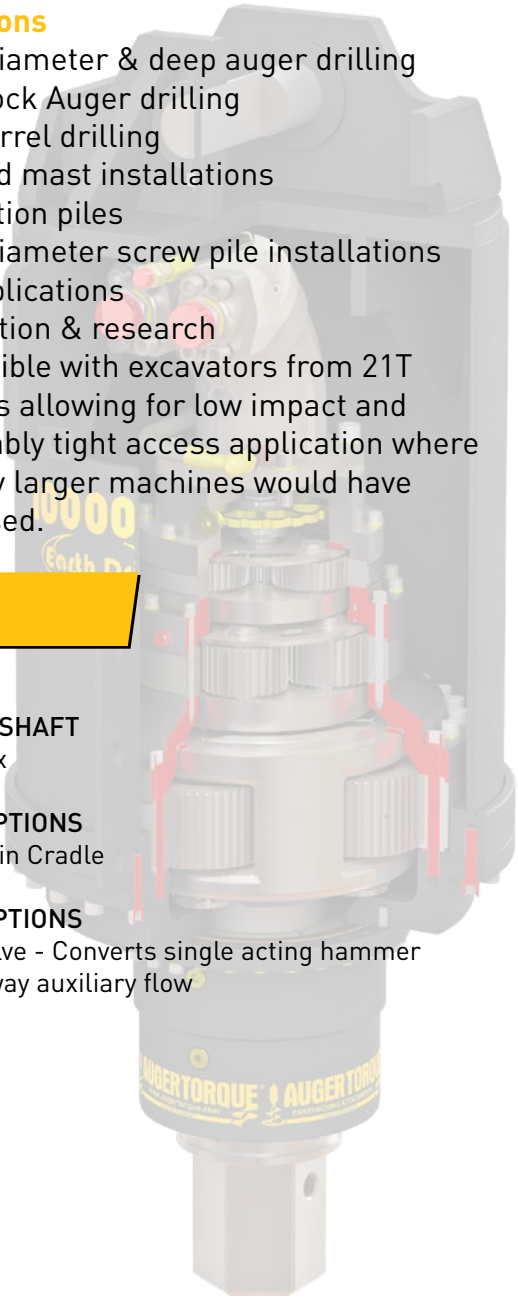
5.9 in Hex

### HITCH OPTIONS

Double Pin Cradle

### VALVE OPTIONS

2 Way Valve - Converts single acting hammer into a 2 way auxiliary flow



Part of the Auger Torque Earthmoving range

**EARTH DRILLS | AUGERS & WEAR PARTS | MAST-BASED DRILLING RIG | TRENCHERS**

[www.augertorqueusa.com](http://www.augertorqueusa.com)

CALL +1 844 287 6300

EMAIL [sales@augertorqueusa.com](mailto:sales@augertorqueusa.com)

OR CONTACT YOUR NEAREST DEALER

99-97853 REV 3-2