



CEMENT MIXER BOWL



TURN YOUR EARTH DRILL INTO A CEMENT MIXER

Accessing a traditional cement mixer when working over rough terrain can prove difficult. Auger Torque's Drill/Mix solution changes all of this.

Available with a 48 gallon capacity, the Auger Torque Mixer Bowl attaches quickly and easily to our Earth Drills. Skidsteer and Excavator mounting brackets are available.

The Auger Torque Mixer Bowl is a great match with our Mini Loader Earth Drill range.

Mixing in inaccessible areas where stand alone machines are not practical has never been easier!

Visit the Auger Torque website to watch a demo



www.augertorqueusa.com

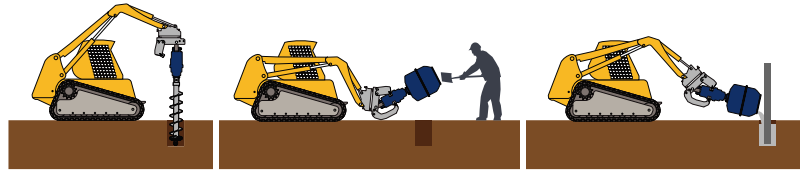
CALL +1 770 741 0180

EMAIL sales@augertorqueusa.com

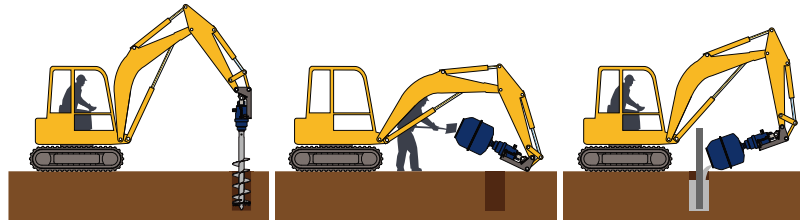
OR CONTACT YOUR NEAREST DEALER

Ideal for fencing contractors

With the aid of the Mixer Cradle Hitch the Auger can be quickly removed and the Mixer Bowl attached and locked in place with the standard Auger Pin. After the concrete has been laid the Auger can be replaced for the next post.



Drill Mix Fill with Skidsteer Loader



Drill Mix Fill with Excavator

Specifications

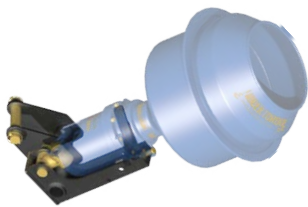
Machine Compatibility: Excavators 1-7 T
Mini Loaders
Skidsteer Loaders

Bowl Capacity: 48 Gallons (180 lt)
Unit Depth: 27 in (690 mm)
Unit Diameter: 28.5 in (724 mm)

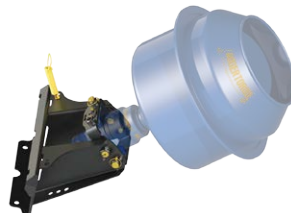
Earth Drill Compatibility: 2200-20 - 5200-35

Unit Weight: 73 lb (33 kg)

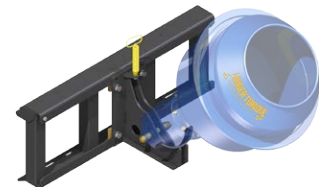
Mounting Frame Options:-



Double Pin Cradle Hitch



Mini Loader 2-Way Swing Frame



Skid Steer Cradle Frame



Part of the Auger Torque Accessories range

PALLET FORKS | MIXER BOWLS | ALIGNMENT MONITORS | LOG SPLITTER & STUMP PLANER

www.augertorqueusa.com

CALL +1 770 741 0180

EMAIL sales@augertorqueusa.com

OR CONTACT YOUR NEAREST DEALER