



EARTH DRILL SERIES 3.5



SUITABLE FOR 4.5 - 8 TONNE EXCAVATORS, SKIDSTEERS, BACKHOES, TELEHANDLERS & TRUCK CRANES

The Series 3.5 Earth Drill range is the perfect choice for 4.5-8T excavators, high flow skidsteers, backhoes, telehandlers and truck cranes. And, just like all planetary drives in our line up they are highly engineered and built to last.

HIGH QUALITY HYDRAULIC MOTORS

Auger Torque's huge buying power means we work closely with high quality suppliers to develop the most reliable attachments available on the market today.

EPICYCLIC GEARBOX

Torque is amplified by using the unique Auger Torque planetary gearbox. This system allows the motors output torque to be multiplied with extreme efficiency as well as ensuring the durability and reliability you need.

FORGED HOOD EARS

Standard with all Earth Drills in areas that we know will take a lot of strain. All hood pins are locked for extra safety making it impossible for the hood to detach from your hitch.

NON-DISLODEMENT SHAFT

Unique to Auger Torque, the Non-Dislodgement Shaft is a single piece drive shaft assembled top down and locked into the Earth Drill housing. This design guarantees that the shaft will never fall out, making for a safer work environment, not only for the operator but also any surrounding workers, a **MUST-HAVE FEATURE** for any safety conscious company.



Visit the Auger Torque website to watch a demo

www.augertorqueusa.com

CALL +1 770 741 0180

EMAIL sales@augertorqueusa.com

OR CONTACT YOUR NEAREST DEALER

EARTH DRILL - SERIES 3.5

Features

- ▶ Unique Auger Torque planetary gearbox offering high efficiency and extreme durability
- ▶ Single piece drive shaft
- ▶ Bearings fitted 50% larger than competitors
- ▶ Heavy duty steel construction
- ▶ Auger Torque's industry leading warranty
- ▶ Compatible with Auger Torques In-Site range of Alignment and Torque Monitoring products for **accurate earth drilling applications.**

Applications

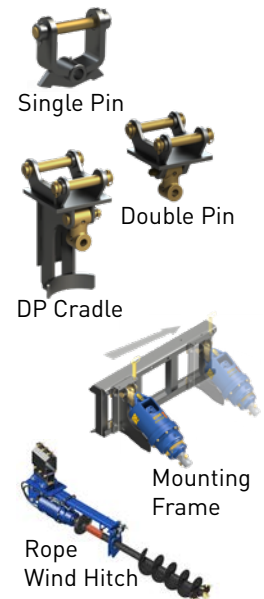
- ▶ Pre-augering
- ▶ Pole and mast installations
- ▶ Rail applications
- ▶ Deep hole applications
- ▶ Well boring

Specifications

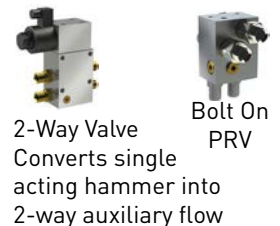


Model		4000-30	5200-35	6000-40	8000-40	4000-14	5000-14
Carrier Weight							
Excavator		4.5-6t	5-7t	6-8t	-	-	-
Skidsteer		100hp	135lpm/36gpm	150lpm/40gpm	-	-	-
Backhoe		-	✓	✓	✓	-	-
Telehandler		4.5-7t	5-8t	-	-	-	-
Truck Crane		-	-	-	-	15t/m	9-18t/m
Torque Range	Nm	1685-5477	2133-6931	2717-8152	3281-10662	1685-5477	2098-6819
	ft-lb	1243-4039	1573-5112	2004-6012	2419-7863	1243-4039	1547-5029
Oil Pressure Range	Bar	80-260	80-260	80-240	80-260	80-260	80-260
	psi	1160-3771	1160-3771	1160-3481	1160-3771	1160-3771	1160-3771
Oil Flow Range	lpm	40-115	60-135	70-150	70-150	15-50	15-50
	gpm	11-30	16-36	19-40	19-40	4-14	4-14
Speed Range	rpm	30-87	36-81	33-70	27-58	11-38	9-30
Unit Height	mm	780	780	780	883	780	780
	inch	31	31	31	35	31	31
Unit Diameter	mm	269	269	269	290	269	269
	inch	11	11	11	12	11	11
Unit Weight	kg	108	112	116	162	108	110
	lb	238	247	260	358	238	243
Output Shaft Std	inch	2.5 Hex	2.5 Hex	2.5 Hex	2.5 Hex	2.5 Hex	2.5 Hex
(adaptors available)							

HITCH OPTIONS



EXTRAS (model dependent)



Drilling Performance							
Auger Series		S5	S5	S5	S6	S5	S5
Auger Diameter	mm	150-750	150-900	150-1200	150-900	150-800	150-1000
	inch	6-30	6-36	6-48	6-36	6-32	6-40
Drilling Depth*	m	4-2.4	5-2.1	6-2.4	6.5-3.2	4-2.1	5-1.6
	ft	13-8	16-7	20-8	21-10	13-7	16-5

*Dependent on ground type



Part of the Auger Torque Earthmoving range

EARTH DRILLS | AUGERS & WEAR PARTS | MAST-BASED DRILLING RIG | TRENCHERS | HAMMERS

www.augertorqueusa.com

CALL +1 770 741 0180

EMAIL sales@augertorqueusa.com

OR CONTACT YOUR NEAREST DEALER